

\$839,900 - 5732 Keeping Crescent, Edmonton

MLS® #E4432485

\$839,900

6 Bedroom, 4.00 Bathroom, 2,799 sqft

Single Family on 0.00 Acres

Keswick Area, Edmonton, AB

Over 4100 sq ft total living space. Discover luxury and functionality in this stunning Custom built 6-bedroom, 4 full bathroom home nestled in the prestigious community of Keswick. Designed with families in mind, this home offers exceptional space, comfort, and top-tier upgrades throughout. From the moment you enter, you'll be impressed by the open-to-below concept that fills the home with natural light and grandeur. The main level features a spacious grate room, perfect for entertaining or relaxing, along with a versatile flex room ideal for guest space. The heart of the home is a beautifully upgraded kitchen with high-end finishes, flowing seamlessly into the living and dining areas. But that's not all—this property also features a fully finished basement with 2 FURNACE and a massive 2nd kitchen, SEPARATE ENTRANCE offering incredible potential for extended family living and future suite. With premium upgrades throughout, custom cabinetry, and designer lighting, this home is move-in ready.

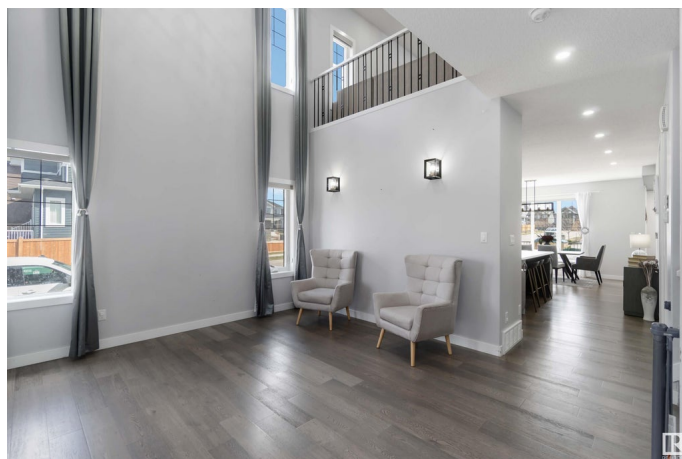
Built in 2020

Essential Information

MLS® # E4432485

Price \$839,900

Bedrooms 6



Bathrooms	4.00
Full Baths	4
Square Footage	2,799
Acres	0.00
Year Built	2020
Type	Single Family
Sub-Type	Detached Single Family
Style	2 Storey
Status	Active

Community Information

Address	5732 Keeping Crescent
Area	Edmonton
Subdivision	Keswick Area
City	Edmonton
County	ALBERTA
Province	AB
Postal Code	T6W 4K4

Amenities

Amenities	Air Conditioner, Ceiling 9 ft., Deck, No Animal Home, No Smoking Home, Vinyl Windows, HRV System, 9 ft. Basement Ceiling
Parking Spaces	4
Parking	Double Garage Attached

Interior

Interior Features	ensuite bathroom
Appliances	Air Conditioning-Central, Dishwasher-Built-In, Fan-Ceiling, Garage Control, Garage Opener, Hood Fan, Oven-Built-In, Oven-Microwave, Stove-Countertop Gas, Stove-Electric, Window Coverings, Dryer-Two, Refrigerators-Two, Washers-Two
Heating	Forced Air-1, Natural Gas
Stories	3
Has Suite	Yes
Has Basement	Yes
Basement	Full, Finished

Exterior

Exterior	Wood, Stone, Vinyl
----------	--------------------

Exterior Features	Airport Nearby, Corner Lot, Golf Nearby, Landscaped, No Back Lane, Playground Nearby, Schools, Shopping Nearby
Roof	Vinyl Shingles
Construction	Wood, Stone, Vinyl
Foundation	Concrete Perimeter

School Information

Elementary	Joan Carr Catholic
------------	--------------------

Additional Information

Date Listed	April 24th, 2025
Days on Market	22
Zoning	Zone 56
HOA Fees	350
HOA Fees Freq.	Annually

DATA IS DEEMED RELIABLE BUT IS NOT GUARANTEED ACCURATE BY THE REALTORS® ASSOCIATION OF EDMONTON. COPYRIGHT 2025 BY THE REALTORS® ASSOCIATION OF EDMONTON. ALL RIGHTS RESERVED.Trademarks are owned or controlled by the Canadian Real Estate Association (CREA) and identify real estate professionals who are members of CREA (REALTOR®, REALTORS®) and/or the quality of services they provide (MLS®, Multiple Listing Service®)

Listing information last updated on May 16th, 2025 at 2:47pm MDT