

## \$449,900 - 5138 Crabapple Link, Edmonton

MLS® #E4432625

**\$449,900**

4 Bedroom, 3.50 Bathroom, 1,249 sqft  
Single Family on 0.00 Acres

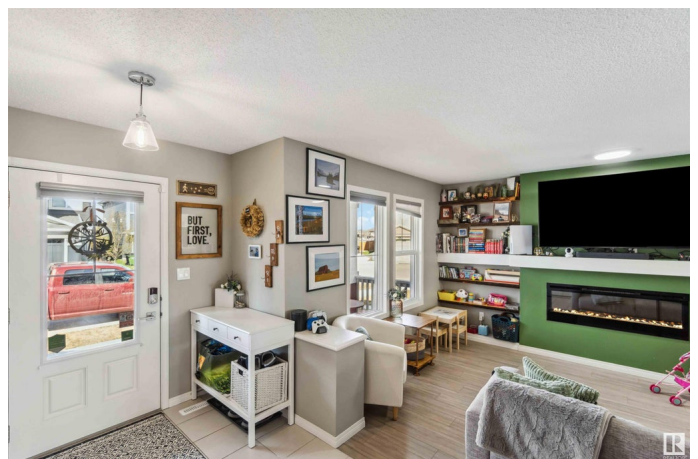
The Orchards At Ellerslie, Edmonton, AB

This charming home in The Orchards at Ellerslie offers nearly 1,300 sq ft of well-designed living space plus a fully finished basement. The open-concept main floor features a bright great room, dining area, and a stylish L-shaped kitchen with quartz countertops. Upstairs, enjoy a spacious primary suite with walk-in closet (built-in organizers) and 3pc ensuite, plus two additional bedrooms and a 4pc bathroom. Outside, enjoy a fenced yard, deck, patio, and double detached garage. This vibrant community includes trails, ponds, and exclusive access to an 8.4-acre residentsâ€™ park with meeting rooms, a 135-person banquet hall, tennis courts, a regulation-size hockey/skating rink, spray park, kidsâ€™ skating pond, and toboggan hill. Conveniently located near schools, shopping, and with quick access to Anthony Henday and Ellerslie Road. All this home needs is YOU!

Built in 2016

### Essential Information

|            |           |
|------------|-----------|
| MLS® #     | E4432625  |
| Price      | \$449,900 |
| Bedrooms   | 4         |
| Bathrooms  | 3.50      |
| Full Baths | 3         |



|                |                        |
|----------------|------------------------|
| Half Baths     | 1                      |
| Square Footage | 1,249                  |
| Acres          | 0.00                   |
| Year Built     | 2016                   |
| Type           | Single Family          |
| Sub-Type       | Detached Single Family |
| Style          | 2 Storey               |
| Status         | Active                 |

### Community Information

|             |                           |
|-------------|---------------------------|
| Address     | 5138 Crabapple Link       |
| Area        | Edmonton                  |
| Subdivision | The Orchards At Ellerslie |
| City        | Edmonton                  |
| County      | ALBERTA                   |
| Province    | AB                        |
| Postal Code | T6X 0X4                   |

### Amenities

|           |   |
|-----------|---|
| Amenities | Closet Organizers, Deck, Detectors Smoke, Patio |
| Parking   | Double Garage Detached                          |

### Interior

|                   |   |
|-------------------|---|
| Interior Features | ensuite bathroom  |
| Appliances        | Dishwasher-Built-In, Dryer, Garage Control, Garage Opener, Hood Fan, Refrigerator, Stove-Electric, Washer, Window Coverings |
| Heating           | Forced Air-1, Natural Gas   |
| Stories           | 3   |
| Has Basement      | Yes   |
| Basement          | Full, Finished  |

### Exterior

|                   |  |
|-------------------|--|
| Exterior          | Wood, Vinyl  |
| Exterior Features | Back Lane, Fenced, Flat Site, Landscaped, Park/Reserve, Playground Nearby, Schools, Shopping Nearby, See Remarks |
| Roof              | Asphalt Shingles   |
| Construction      | Wood, Vinyl  |
| Foundation        | Concrete Perimeter   |

### School Information

|            |                      |
|------------|----------------------|
| Elementary | Jan Reimer School    |
| Middle     | Jan Reimer School    |
| High       | J. Percy Page School |

### **Additional Information**

|                |                  |
|----------------|------------------|
| Date Listed    | April 24th, 2025 |
| Days on Market | 45               |
| Zoning         | Zone 53          |
| HOA Fees       | 428.57           |
| HOA Fees Freq. | Annually         |

DATA IS DEEMED RELIABLE BUT IS NOT GUARANTEED ACCURATE BY THE REALTORS® ASSOCIATION OF EDMONTON. COPYRIGHT 2025 BY THE REALTORS® ASSOCIATION OF EDMONTON. ALL RIGHTS RESERVED. Trademarks are owned or controlled by the Canadian Real Estate Association (CREA) and identify real estate professionals who are members of CREA (REALTOR®, REALTORS®) and/or the quality of services they provide (MLS®, Multiple Listing Service®)

Listing information last updated on June 8th, 2025 at 6:32am MDT