

\$450,000 - 28 Linkside Place, Spruce Grove

MLS® #E4433794

\$450,000

3 Bedroom, 3.00 Bathroom, 1,457 sqft

Single Family on 0.00 Acres

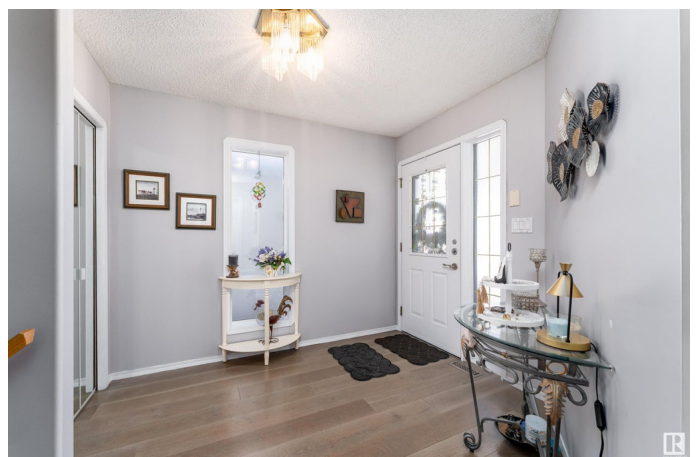
Linkside, Spruce Grove, AB

Welcome to this beautiful bi-level home on a quiet cul-de-sac in sought-after community of Linkside! This 3 bed, 3 bath home boasts 1,456 sq. ft. of bright, open living space with vaulted ceilings. The kitchen features new appliances and abundant cabinetry, dining space leading to the backyard, the living room shines with natural light and a stunning three-sided glass fireplace. Upstairs offers a large primary suite with ensuite and a 4pc bath serving a second bedroom. The fully finished lower level includes big windows, a rec room, 1 bedroom, full bath, crawlspace, and storage. Enjoy central air conditioning for year round comfort. Recent upgrades include: new HWT & furnace, flooring, paint, exterior doors, garage doors, deck and balcony. Snow and lawn care handled by the home association. Biggest lot on the block! Located near walking trails, parks and The Links Golf Course.

Built in 1994

Essential Information

MLS® #	E4433794
Price	\$450,000
Bedrooms	3
Bathrooms	3.00
Full Baths	3
Square Footage	1,457



Acres	0.00
Year Built	1994
Type	Single Family
Sub-Type	Residential Attached
Style	Bi-Level
Status	Active

Community Information

Address	28 Linkside Place
Area	Spruce Grove
Subdivision	Linkside
City	Spruce Grove
County	ALBERTA
Province	AB
Postal Code	T7X 3C5

Amenities

Amenities	Air Conditioner, Crawl Space, Deck, Detectors Smoke, Hot Water Natural Gas, No Animal Home, No Smoking Home, Vaulted Ceiling
Parking Spaces	4
Parking	Double Garage Attached

Interior

Interior Features	ensuite bathroom
Appliances	Air Conditioning-Central, Dishwasher-Built-In, Dryer, Garage Control, Garage Opener, Garburator, Microwave Hood Fan, Oven-Built-In, Refrigerator, Vacuum System Attachments, Vacuum Systems, Washer
Heating	Forced Air-1, Natural Gas
Fireplace	Yes
Fireplaces	Three Sided
Stories	3
Has Basement	Yes
Basement	Full, Finished

Exterior

Exterior	Wood, Stucco
Exterior Features	Cul-De-Sac, Golf Nearby, Low Maintenance Landscape, Playground Nearby
Roof	Asphalt Shingles

Construction	Wood, Stucco
Foundation	Concrete Perimeter

Additional Information

Date Listed	May 1st, 2025
Days on Market	89
Zoning	Zone 91
HOA Fees	135
HOA Fees Freq.	Monthly

DATA IS DEEMED RELIABLE BUT IS NOT GUARANTEED ACCURATE BY THE REALTORS® ASSOCIATION OF EDMONTON. COPYRIGHT 2025 BY THE REALTORS® ASSOCIATION OF EDMONTON. ALL RIGHTS RESERVED.Trademarks are owned or controlled by the Canadian Real Estate Association (CREA) and identify real estate professionals who are members of CREA (REALTOR®, REALTORS®) and/or the quality of services they provide (MLS®, Multiple Listing Service®)

Listing information last updated on July 29th, 2025 at 12:32am MDT