

## \$339,900 - 78 2021 Grantham Court, Edmonton

MLS® #E4437724

**\$339,900**

3 Bedroom, 2.50 Bathroom, 1,243 sqft

Condo / Townhouse on 0.00 Acres

Glastonbury, Edmonton, AB

Beautifully maintained 3-bedroom, 2.5-bath townhome in the desirable Glastonbury community. The bright living room features a cozy fireplace and flows into a functional kitchen and dining area, creating a warm and welcoming space for everyday living. Upstairs offers three comfortable bedrooms, including a primary suite with a private ensuite, as well as a full bathroom for the additional bedrooms. A finished basement adds versatile space, perfect for a rec room, home office, or gym. Outside, enjoy a fully landscaped backyard with a spacious deck and a handy storage shed—ideal for relaxing or entertaining. The home includes a front-attached single garage and an extended driveway approved by the condo board, providing parking for up to three vehicles. Additional features include low condo fees, great curb appeal, and a prime location close to highways, shopping, schools, and all amenities. A wonderful opportunity in a family-friendly neighborhood!

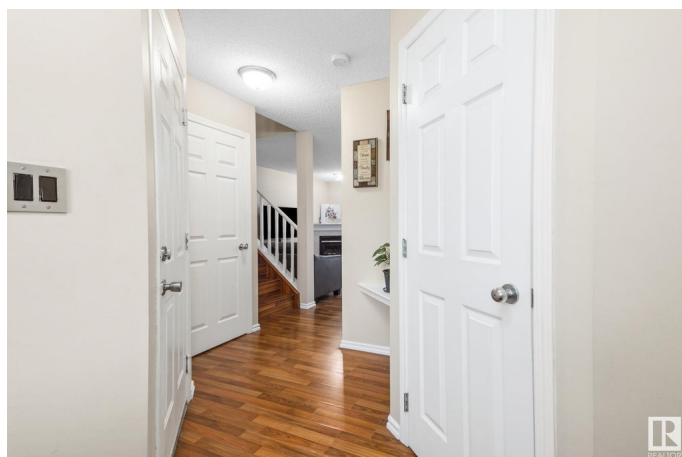
Built in 2002

### Essential Information

MLS® # E4437724

Price \$339,900

Bedrooms 3



Bathrooms	2.50
Full Baths	2
Half Baths	1
Square Footage	1,243
Acres	0.00
Year Built	2002
Type	Condo / Townhouse
Sub-Type	Half Duplex
Style	2 Storey
Status	Active

### Community Information

Address	78 2021 Grantham Court
Area	Edmonton
Subdivision	Glastonbury
City	Edmonton
County	ALBERTA
Province	AB
Postal Code	T5T 6V7

### Amenities

Amenities	Ceiling 9 ft., Deck, Detectors Smoke, Parking-Visitor
Parking	Single Garage Attached

### Interior

Interior Features	ensuite bathroom
Appliances	Dishwasher-Built-In, Dryer, Garage Control, Hood Fan, Oven-Microwave, Refrigerator, Stove-Electric, Vacuum System Attachments, Vacuum Systems, Washer, Window Coverings
Heating	Forced Air-1, Natural Gas
Fireplace	Yes
Fireplaces	Wall Mount
Stories	3
Has Basement	Yes
Basement	Full, Finished

### Exterior

Exterior	Wood, Vinyl
Exterior Features	Fenced, Landscaped, Schools, Shopping Nearby

Roof	Asphalt Shingles
Construction	Wood, Vinyl
Foundation	Concrete Perimeter

**Additional Information**

Date Listed	May 22nd, 2025
Days on Market	11
Zoning	Zone 58
HOA Fees	65
HOA Fees Freq.	Annually
Condo Fee	\$259

DATA IS DEEMED RELIABLE BUT IS NOT GUARANTEED ACCURATE BY THE REALTORS® ASSOCIATION OF EDMONTON. COPYRIGHT 2025 BY THE REALTORS® ASSOCIATION OF EDMONTON. ALL RIGHTS RESERVED.Trademarks are owned or controlled by the Canadian Real Estate Association (CREA) and identify real estate professionals who are members of CREA (REALTOR®, REALTORS®) and/or the quality of services they provide (MLS®, Multiple Listing Service®)

Listing information last updated on June 2nd, 2025 at 10:47am MDT