

\$489,900 - 16307 112 Street, Edmonton

MLS® #E4438783

\$489,900

4 Bedroom, 2.50 Bathroom, 1,755 sqft

Single Family on 0.00 Acres

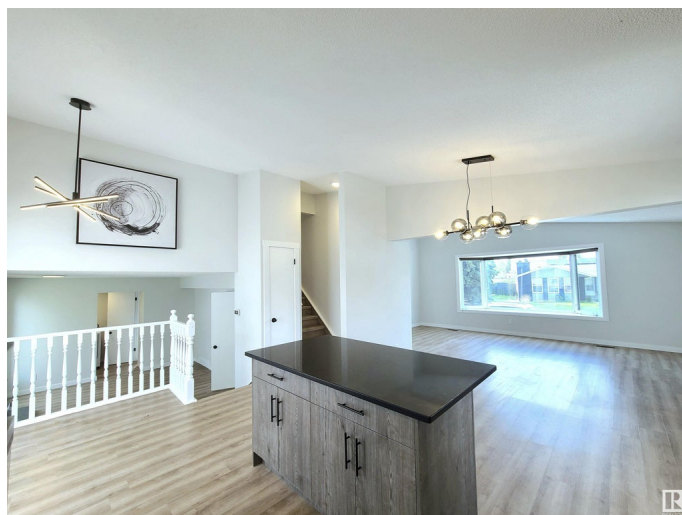
Lorelei, Edmonton, AB

FULLY RENOVATED 1700 sqft home in a family-friendly community of Lorelei. 4 bedrooms above grade! Bright and spacious open concept with vaulted ceiling main floor features NEW kitchen with quartz counter top & NEW stainless steel appliances. Good sized living room & dining area. Upper level offers large 3 bedrooms, 4pc bath & 3pc en-suite. Fully finished basement with large windows above grade. NEW bathrooms, NEW vinyl plank flooring, Newer triple pane windows. 22x24 double garage. Quick possession

Built in 1975

Essential Information

MLS® #	E4438783
Price	\$489,900
Bedrooms	4
Bathrooms	2.50
Full Baths	2
Half Baths	1
Square Footage	1,755
Acres	0.00
Year Built	1975
Type	Single Family
Sub-Type	Detached Single Family
Style	4 Level Split
Status	Active



Community Information

Address	16307 112 Street
Area	Edmonton
Subdivision	Lorelei
City	Edmonton
County	ALBERTA
Province	AB
Postal Code	T5X 2B2

Amenities

Amenities	Vinyl Windows
Parking	Double Garage Detached

Interior

Interior Features	ensuite bathroom
Appliances	Dishwasher-Built-In, Dryer, Microwave Hood Fan, Refrigerator, Stove-Electric, Washer
Heating	Forced Air-1, Natural Gas
Stories	4
Has Basement	Yes
Basement	Full, Finished

Exterior

Exterior	Wood, Stucco
Exterior Features	Back Lane, Fenced, Fruit Trees/Shrubs, Public Transportation
Roof	Asphalt Shingles
Construction	Wood, Stucco
Foundation	Concrete Perimeter

Additional Information

Date Listed	May 27th, 2025
Days on Market	63
Zoning	Zone 27

DATA IS DEEMED RELIABLE BUT IS NOT GUARANTEED ACCURATE BY THE REALTORS® ASSOCIATION OF EDMONTON. COPYRIGHT 2025 BY THE REALTORS® ASSOCIATION OF EDMONTON. ALL RIGHTS RESERVED.Trademarks are owned or controlled by the Canadian Real Estate Association (CREA) and identify real estate professionals who are members of CREA (REALTOR®, REALTORS®) and/or the quality of services they provide (MLS®, Multiple Listing Service®)

Listing information last updated on July 29th, 2025 at 12:18pm MDT