

\$399,900 - 21215 90 Avenue, Edmonton

MLS® #E4445751

\$399,900

3 Bedroom, 2.50 Bathroom, 1,344 sqft

Single Family on 0.00 Acres

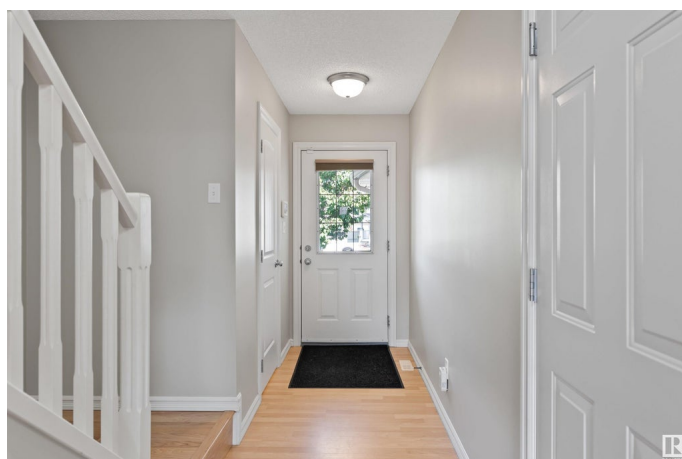
Suder Greens, Edmonton, AB

BETTER THAN NEW! Meticulously maintained, this almost 1350 sq.ft. 3 Bed, 2 1/2 Bath home in SUDER GREENS is perfect for first home buyers, young professionals, and empty nesters. Freshly painted, the open floor plan features laminate flooring, NEW ROOF (2023), a neutral colour palette, a kitchen island, CENTRAL AIR CONDITIONING & a large pie-shaped lot. Front and rear landscaping, along with a cozy deck, complete this already impressive home. Located within a community close to all amenities, including schools, shopping, a future LRT, West Edmonton Mall & the Lewis Estates Golf Course, this home is the perfect blend of comfortable living. EXCELLENT VALUE!

Built in 2005

Essential Information

MLS® #	E4445751
Price	\$399,900
Bedrooms	3
Bathrooms	2.50
Full Baths	2
Half Baths	1
Square Footage	1,344
Acres	0.00
Year Built	2005



Type	Single Family
Sub-Type	Half Duplex
Style	2 Storey
Status	Active

Community Information

Address	21215 90 Avenue
Area	Edmonton
Subdivision	Suder Greens
City	Edmonton
County	ALBERTA
Province	AB
Postal Code	T5T 6Z1

Amenities

Amenities	Air Conditioner, Deck
Parking	Single Garage Attached

Interior

Interior Features	ensuite bathroom
Appliances	Air Conditioning-Central, Dishwasher-Built-In, Dryer, Garage Control, Garage Opener, Hood Fan, Refrigerator, Stove-Electric, Washer, Window Coverings
Heating	Forced Air-1, Natural Gas
Stories	2
Has Basement	Yes
Basement	Full, Unfinished

Exterior

Exterior	Wood, Vinyl
Exterior Features	Cul-De-Sac, Fenced, Golf Nearby, Landscaped, Playground Nearby, Public Transportation, Schools, Shopping Nearby
Roof	Asphalt Shingles
Construction	Wood, Vinyl
Foundation	Concrete Perimeter

School Information

Elementary	Winterburn
Middle	Michael Phair
High	Jasper Place

Additional Information

Date Listed July 4th, 2025
Days on Market 1
Zoning Zone 58

DATA IS DEEMED RELIABLE BUT IS NOT GUARANTEED ACCURATE BY THE REALTORS® ASSOCIATION OF EDMONTON. COPYRIGHT 2025 BY THE REALTORS® ASSOCIATION OF EDMONTON. ALL RIGHTS RESERVED.Trademarks are owned or controlled by the Canadian Real Estate Association (CREA) and identify real estate professionals who are members of CREA (REALTOR®, REALTORS®) and/or the quality of services they provide (MLS®, Multiple Listing Service®)
Listing information last updated on July 4th, 2025 at 11:17pm MDT