

Courtesy Of Haley Streu And Dwight Streu Of MaxWell Polaris

\$210,000 - 429 16807 100 Avenue, Edmonton

MLS® #E4451316

\$210,000

2 Bedroom, 2.00 Bathroom, 858 sqft
Condo / Townhouse on 0.00 Acres

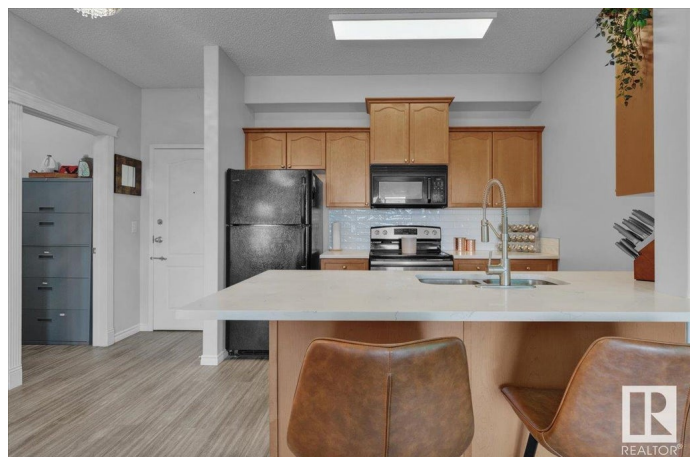
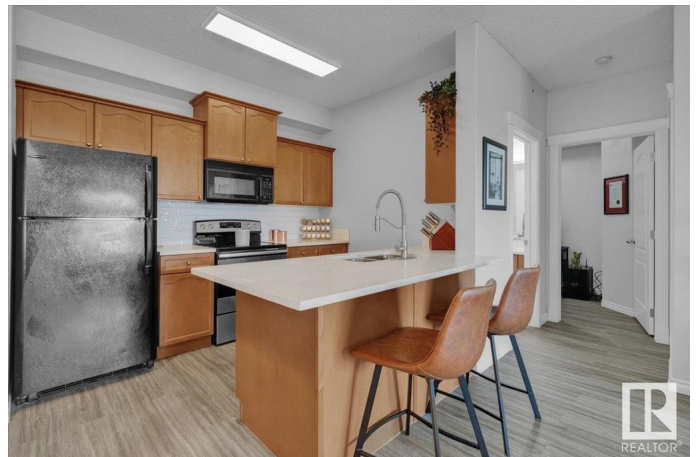
Glenwood (Edmonton), Edmonton, AB

RENOVATED TOP FLOOR UNIT WITH A PARK VIEW & 3 PARKING STALLS! Within walking distance to restaurants, shops, transit & more. You can't beat this location. This sunny, top-floor 2 bed + den, 2 bath condo faces Jack Horan Park and features soaring ceilings, large windows & new flooring. The updated kitchen has quartz countertops, subway tile backsplash & a modern sink/faucet. The open-concept floor plan connects kitchen, dining & living. Perfect for entertaining! The spacious primary bedroom fits a king, with a walk-through closet & 3pc ensuite. The second bedroom is across the unit near the 4pc main bath. Ideal for roommates or guests. The den makes a great office or extra storage room. Additional upgrades include fresh paint, new toilets, updated lights, in-suite laundry, a large balcony, one titled underground stall + a titled tandem stall. 3 PARKING STALLS TOTAL!

Built in 2004

Essential Information

MLS® #	E4451316
Price	\$210,000
Bedrooms	2
Bathrooms	2.00
Full Baths	2



Square Footage	858
Acres	0.00
Year Built	2004
Type	Condo / Townhouse
Sub-Type	Lowrise Apartment
Style	Single Level Apartment
Status	Active

Community Information

Address	429 16807 100 Avenue
Area	Edmonton
Subdivision	Glenwood (Edmonton)
City	Edmonton
County	ALBERTA
Province	AB
Postal Code	T5P 4Z6

Amenities

Amenities	Ceiling 9 ft., Parking-Visitor, Storage-In-Suite
Parking Spaces	3
Parking	2 Outdoor Stalls, Heated, Parkade, Underground

Interior

Interior Features	ensuite bathroom
Appliances	Dishwasher-Built-In, Microwave Hood Fan, Refrigerator, Stacked Washer/Dryer, Stove-Electric, Window Coverings
Heating	Forced Air-1, Natural Gas
# of Stories	4
Stories	1
Has Basement	Yes
Basement	None, No Basement

Exterior

Exterior	Wood, Vinyl
Exterior Features	Public Swimming Pool, Public Transportation, Schools, Shopping Nearby
Roof	Asphalt Shingles
Construction	Wood, Vinyl
Foundation	Concrete Perimeter

Additional Information

Date Listed August 5th, 2025

Days on Market 8

Zoning Zone 22

Condo Fee \$503

DATA IS DEEMED RELIABLE BUT IS NOT GUARANTEED ACCURATE BY THE REALTORS® ASSOCIATION OF EDMONTON. COPYRIGHT 2025 BY THE REALTORS® ASSOCIATION OF EDMONTON. ALL RIGHTS RESERVED. Trademarks are owned or controlled by the Canadian Real Estate Association (CREA) and identify real estate professionals who are members of CREA (REALTOR®, REALTORS®) and/or the quality of services they provide (MLS®, Multiple Listing Service®)

Listing information last updated on August 12th, 2025 at 11:32pm MDT